

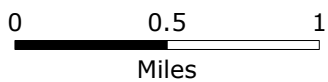
Current & Prospective Land Use

Strafford, Vermont
Town Plan 2021 Map
 1 of 9

Adopted: October 13, 2021

1:40,000

1 inch = 3,333 feet

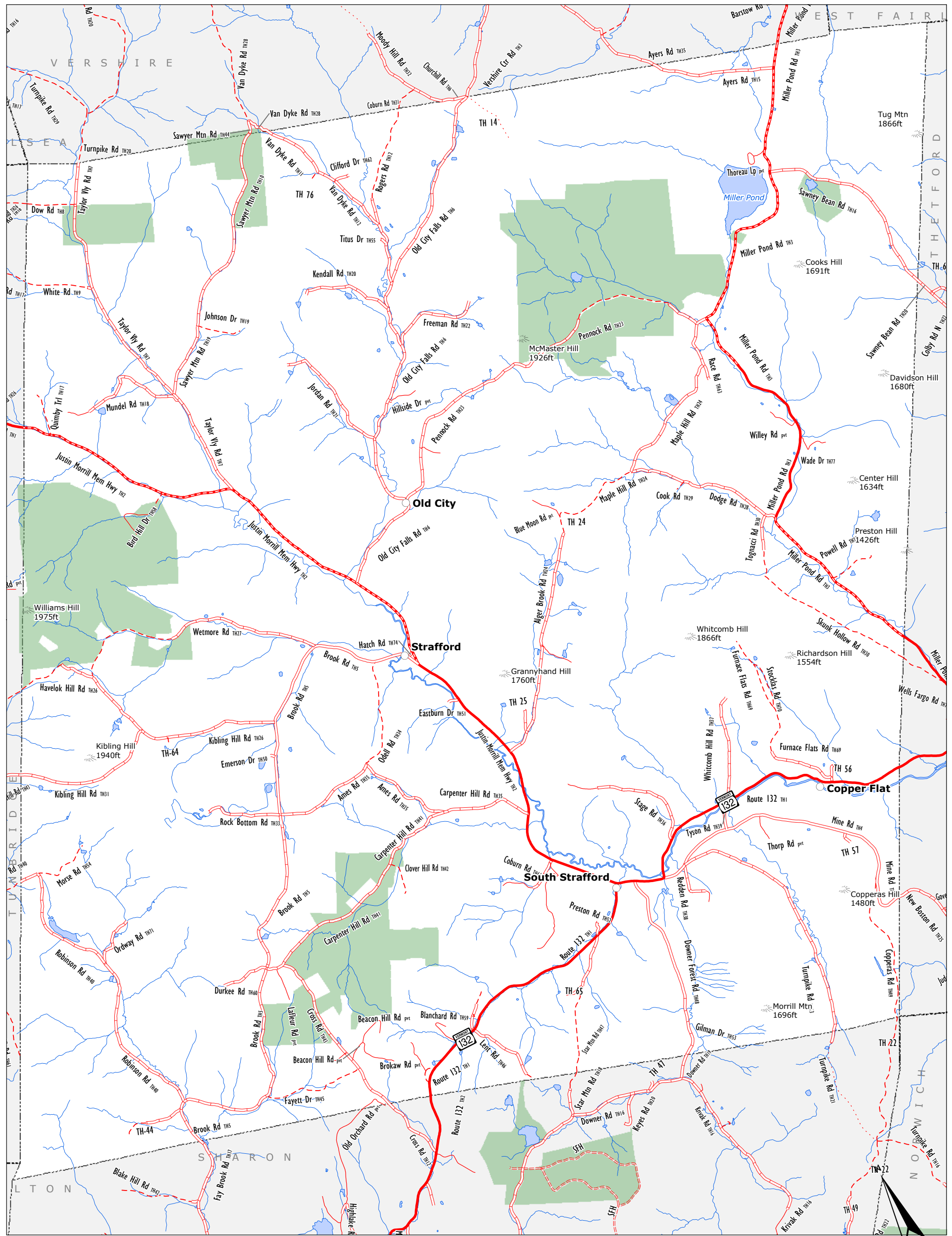


- VT route/TH cls 1
- TH cls 2
- TH cls 2 gravel
- TH cls 3
- TH cls 3 gravel
- TH cls 4
- trail
- private
- US route
- US interstate
- VT forest hwy
- 911 structure

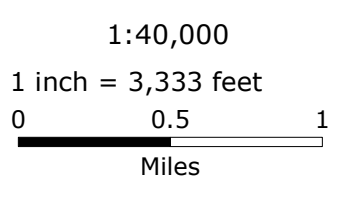
Future Land Use Areas

- RURAL RESIDENTIAL I
- RURAL RESIDENTIAL II
- VILLAGE CENTERS
- LAND FOREST CONSERVATION
- RIVER VALLEY CONSERVATION
- MILLER POND SHORELINE

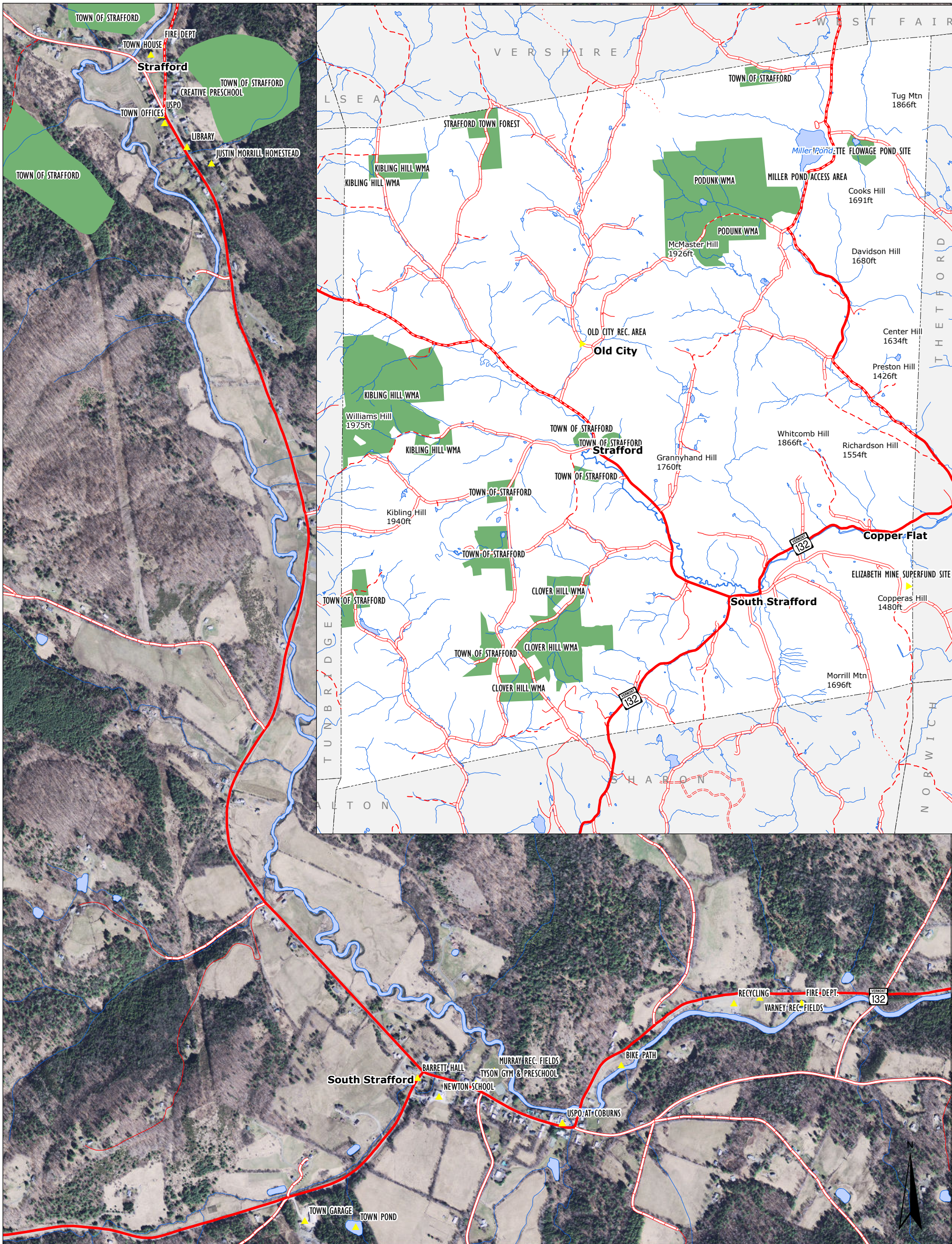
- Conserved Lands
- River Corridor Area
- Elizabeth Mine Possible Groundwater Hazard Zone



Current & Prospective Transportation
 Strafford, Vermont
Town Plan 2021
Map 2 of 9
 Adopted: October 13, 2021



- VT route/TH cls 1
- TH cls 2
- TH cls 2 gravel
- TH cls 3
- TH cls 3 gravel
- TH cls 4
- trail
- private
- US route
- US interstate
- VT forest hwy



Town, Educational & Other Facilities

Strafford, Vermont

Town Plan 2021

Map 3 of 9

Adopted: October 13, 2021

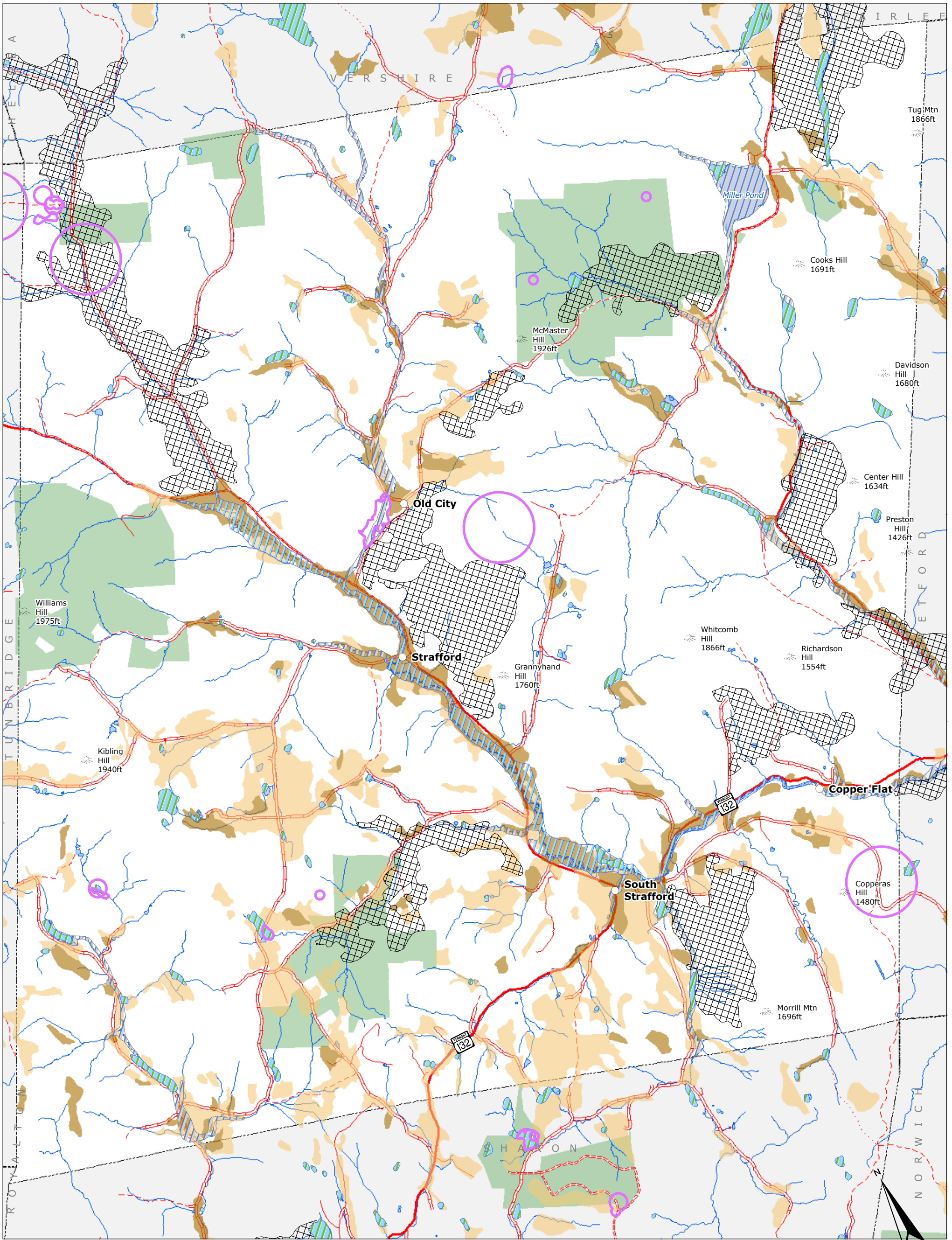
1:12,000

1 inch = 1,000 feet

0 0.1 0.2

Miles





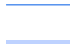


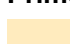


- VT route/TH cls 1
- TH cls 2
- TH cls 2 gravel
- TH cls 3
- TH cls 3 gravel
- TH cls 4
- trail
- private
- US route
- US interstate
- VT forest hwy



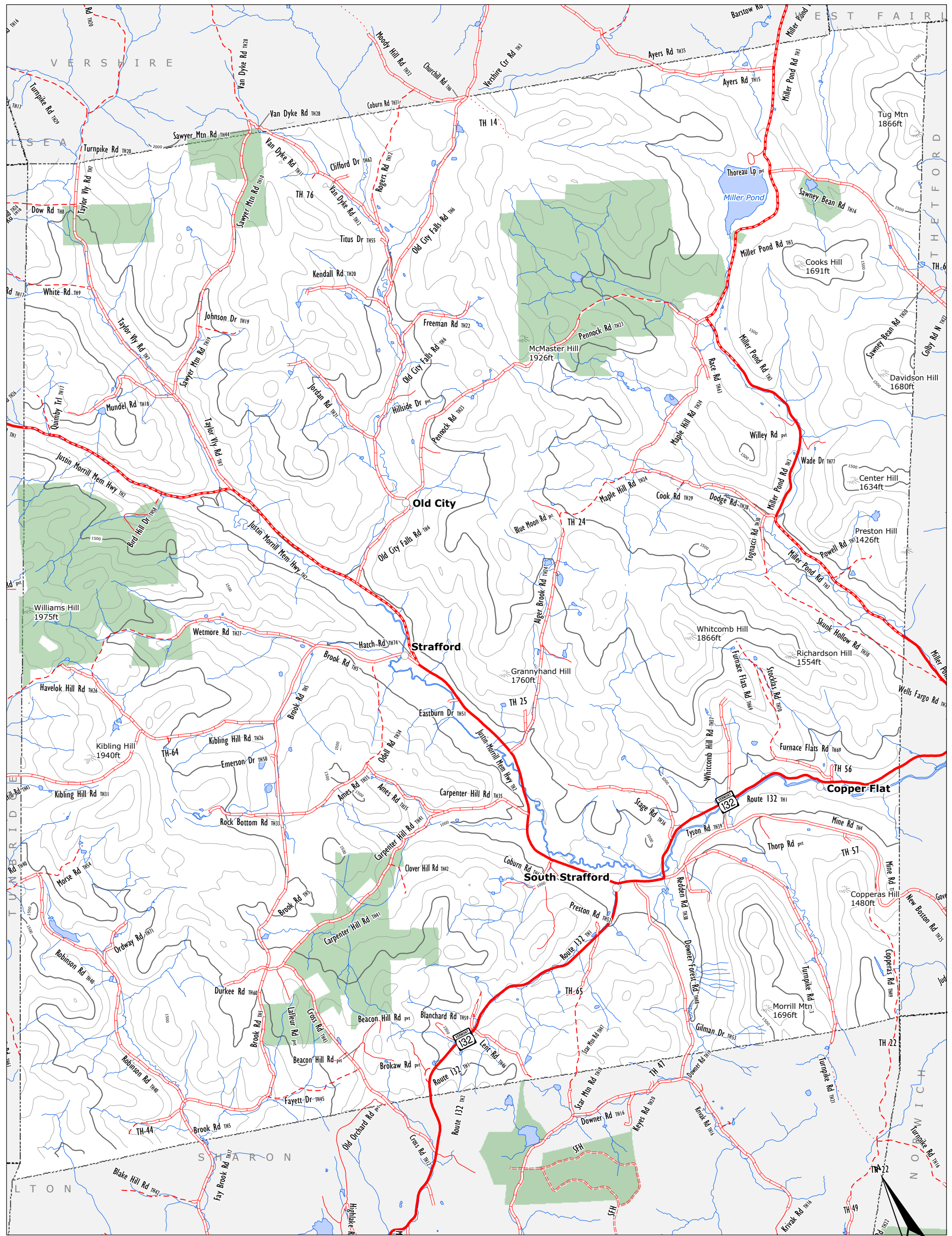
Natural Resources
Strafford, Vermont
Town Plan 2021

Map 4 of 9

Adopted: October 13, 2021:

-  Rare, Threatened, & Endangered Species and Significant Communities
-  Vermont State Wetlands
-  Deer Wintering Areas
-  FEMA Floodplain
-  Rivers & Streams
-  Lakes & Ponds
-  Public Conserved Lands
- Prime Agricultural Soils**
-  Local
-  Prime
-  Statewide

1:40,000
 1 inch = 3,333 feet
 0 0.5 1
 Miles

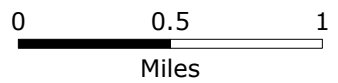


Topography
 Strafford, Vermont
Town Plan 2021
 Map 5 of 9

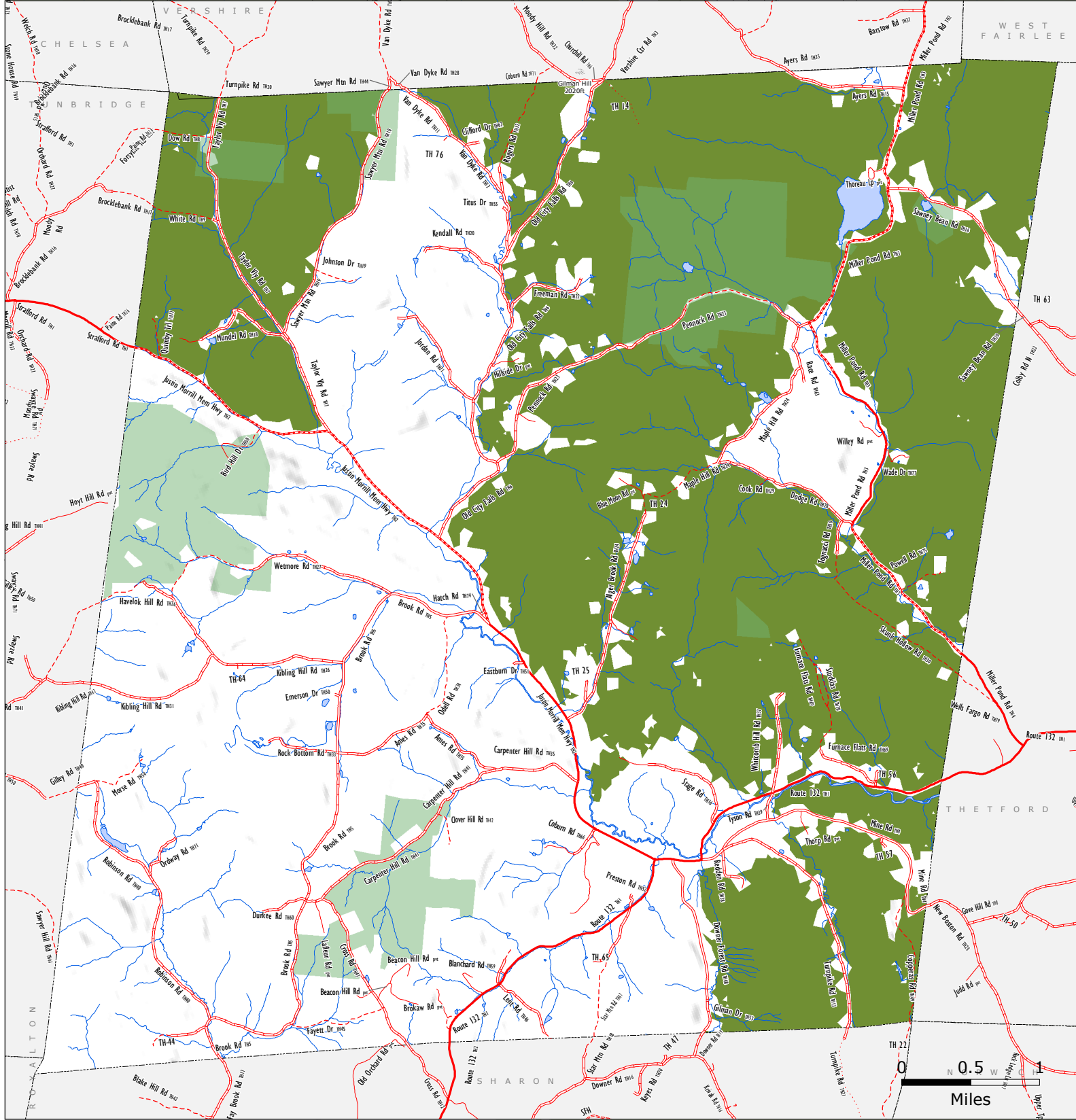
Adopted: October 13, 2021

1:40,000

1 inch = 3,333 feet



- VT route/TH cls 1
- TH cls 2
- TH cls 2 gravel
- TH cls 3
- TH cls 3 gravel
- TH cls 4
- trail
- private
- US route
- US interstate
- VT forest hwy



Strafford Town Plan Forest Blocks

Strafford, Vermont

Map 6 of 9

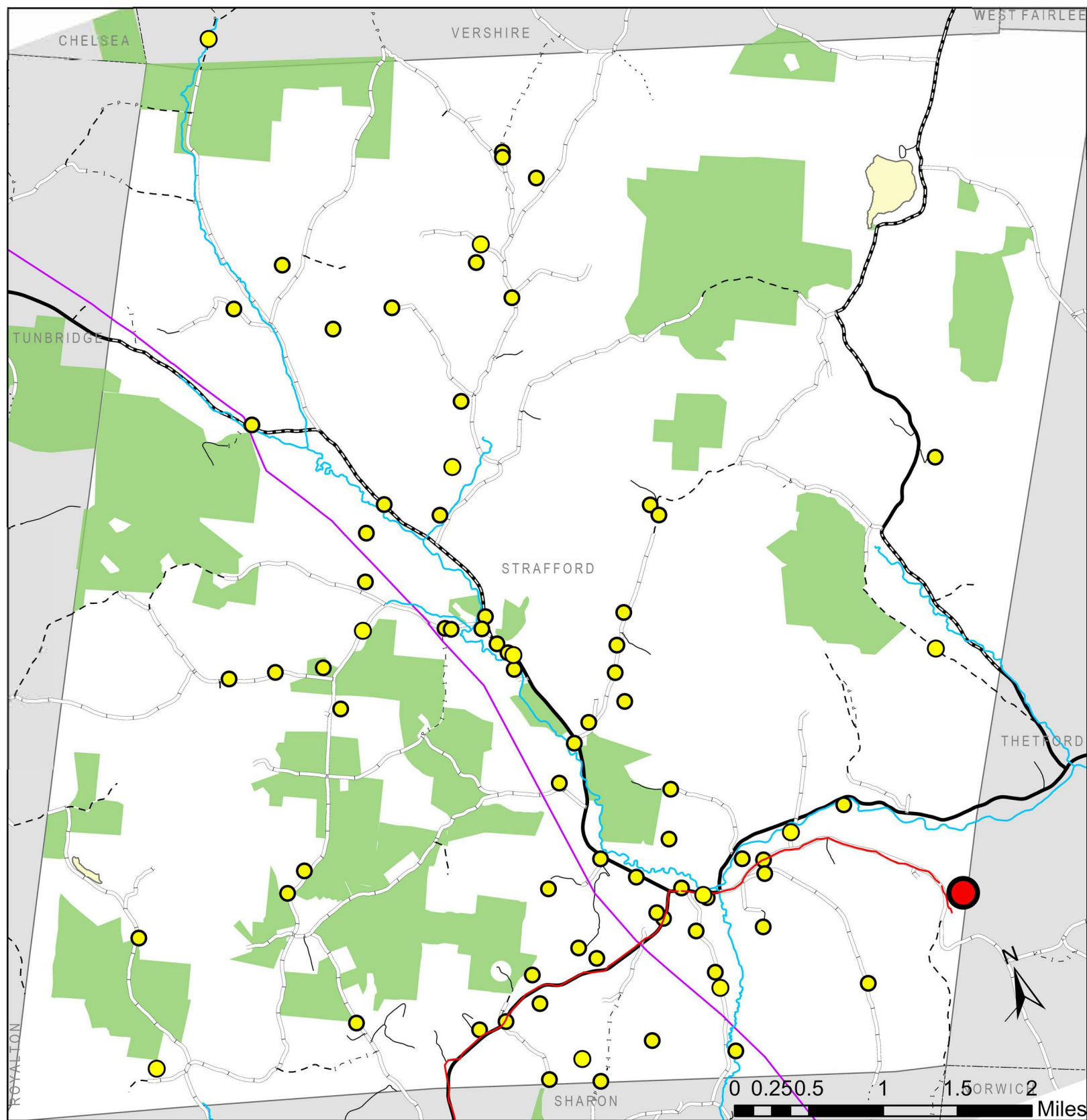
Adopted: October 13, 2021

- VT route/TH cls 1
- TH cls 2
- TH cls 2 gravel
- TH cls 3
- TH cls 3 gravel
- TH cls 4
- trail
- private
- US route
- US interstate
- VT forest hwy
- VCD2a - Highest Priority Connectivity Blocks



1 inch = 5,000 feet
1:60,000













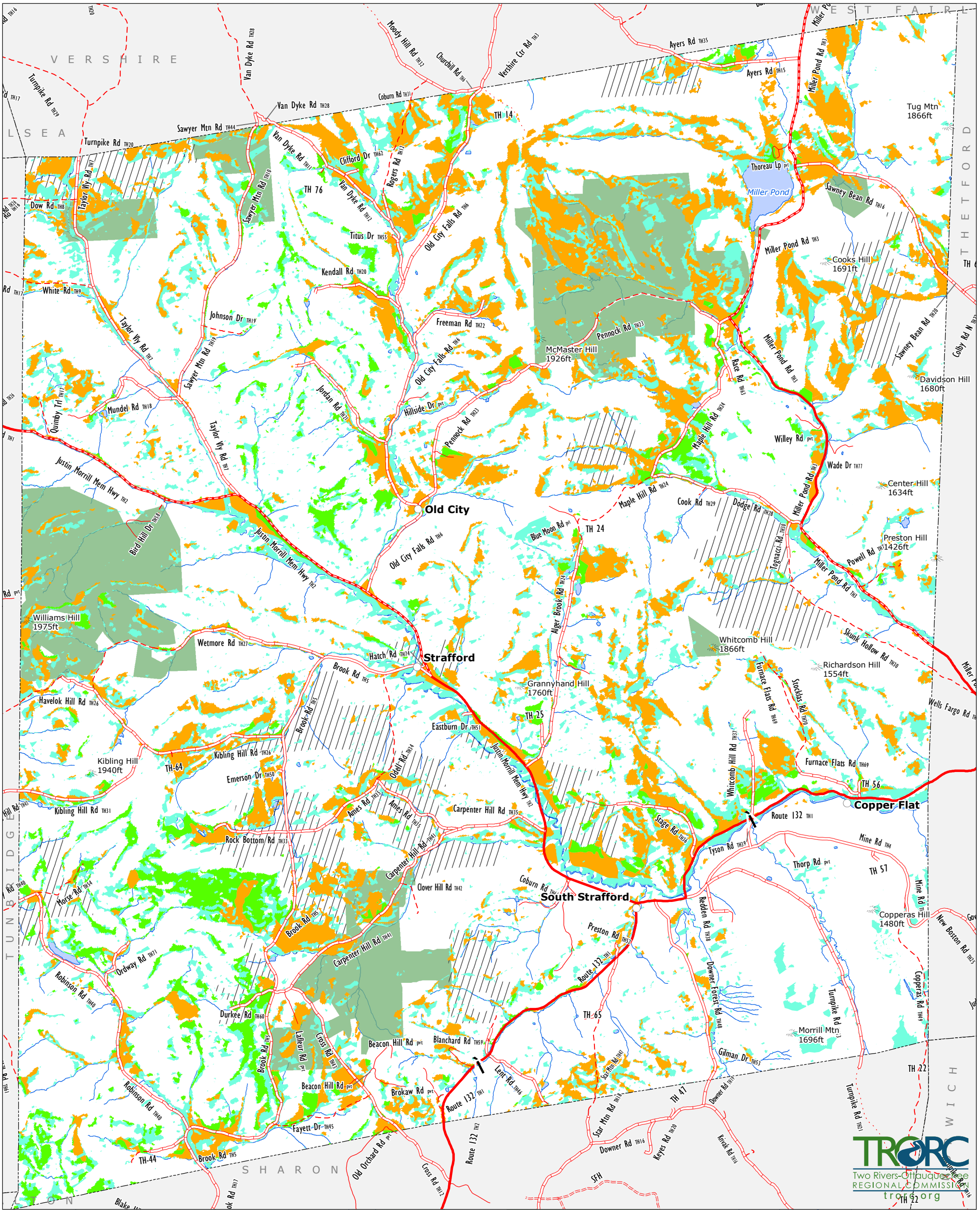
Existing Energy

Strafford, Vermont
 Map 7 of 9
 Town Plan 2021
 Adopted: October 13, 2021

Strafford Renewable Energy Sites

- Capacity kW
-  Less than 150 kW
 -  150 - 500 kW
 -  Over 500 kW

-  Substations
-  DistributionLines_RPCs
-  Conserved Land
-  3-Phase Power Line
- 



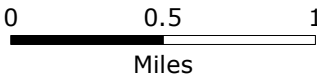
Solar Energy Potential Strafford, Vermont Map 8 of 9

Adopted: October 13, 2021

Adopted:

1:40,000

1 inch = 3,333 feet



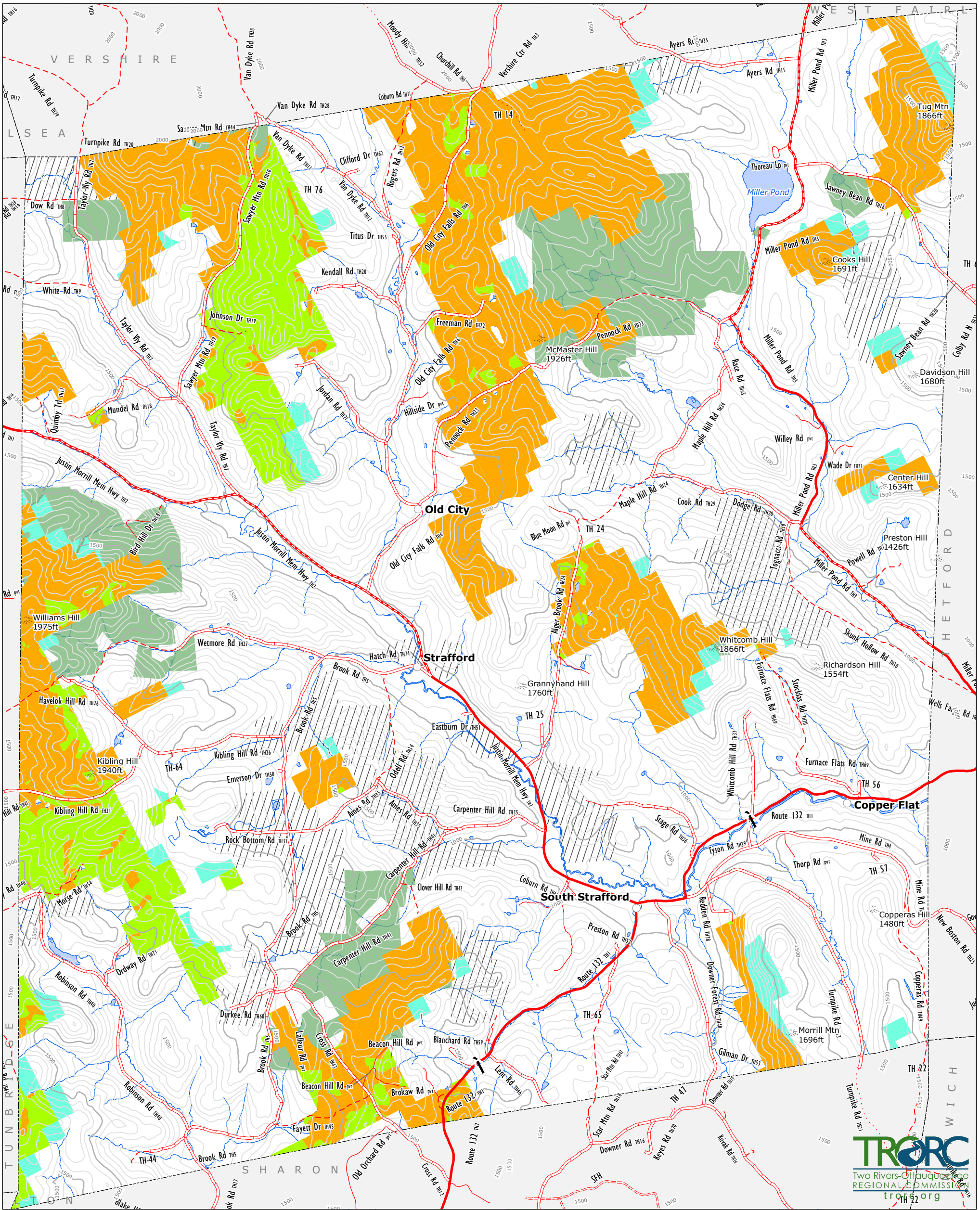
- Substations
- 3 Phase Power Lines
- Prime 1m 3phase
- SOLAR POTENTIAL**
- Prime
- Constraints
- RAW solar
- conserved**
- Conserved
- Public Cons
- Private Cons
- VT route/TH cls 1
- TH cls 2
- TH cls 2 gravel
- TH cls 3
- TH cls 3 gravel
- TH cls 4
- trail
- private
- US route
- US interstate
- VT forest hwy

- Known Constraints
 - Vernal Pools (confirmed and unconfirmed layers)
 - DEC River Corridors
 - FEMA Floodways
 - State-significant Natural Communities and Rare, Threatened, and Endangered Species
 - Wilderness Areas, including National Wilderness Areas
 - Class 1 and Class 2 Wetlands (VSWI and advisory layers)
- Possible Constraints
 - Agricultural Soils (VT Agriculturally Important Soil Units)
 - FEMA Special Flood Hazard Areas
 - Protected Lands (Updated 07/26/2016.)
 - Act 250 Agricultural Soil Mitigation areas
 - Deer Wintering Areas
 - ANR's Vermont Conservation Design Highest Priority Forest Block Datasets
 - Forest Blocks - Connectivity
 - Forest Blocks - Interior
 - Forest Blocks - Physical Land Division
 - Hydric Soils
- TRORC Unsuitable areas (included in known constraints)
 - FEMA Floodways
 - Wilderness Areas, including National Wilderness Areas
 - Class 1 Wetland

Solar
This map shows areas of potential electricity generation from solar energy. It includes areas with good access to solar radiation and also considers other conditions that may limit the feasibility of solar energy development. These limiting factors are referred to as constraints. Areas of prime solar potential exist where the natural conditions make development feasible and no constraints are present.

These maps are designed to initially identify areas and follow-up on-site work is required to verify the areas are feasible for projects. They are subject to revision and are NOT intended to green-light or fast-track projects.

DARK GREEN Prime: No Constraints within 1 mile 3 phase power
GREEN Prime: No Constraints no known or possible constraints present
ORANGE Constraints: no known but at least one or more possible constraints
BLUE GREEN Raw potential: with constraints



Wind Energy Potential

Strafford, Vermont

Map 9 of 9

Adopted: October 13, 2021:

Substations

3 Phase Power Lines

Prime 1m Sphase

ctr50ft

INDXCTR

0

1

Wind Potential

Suitability, HubHeight

Prime, 50

Prime, 70

Constraints, 50

Constraints, 70

RAWwind50m

RAW wind

conserved

Conserved

Public Cons

Private Cons

- VT route/TH cls 1
- TH cls 2
- - - TH cls 2 gravel
- TH cls 3
- - - TH cls 3 gravel
- - - TH cls 4
- - - trail
- private
- US route
- US interstate
- - - VT forest hwy

- Known Constraints**
- Vernal Pools (confirmed and unconfirmed layers)
 - DEC River Corridors
 - FEMA Floodways
 - State-significant Natural Communities and Rare, Threatened, and Endangered Species
 - Wilderness Areas, including National Wilderness Areas
 - Class 1 and Class 2 Wetlands (VSWI and advisory layers)
- Possible Constraints**
- Agricultural Soils (VT Agriculturally Important Soil Units)
 - FEMA Special Flood Hazard Areas
 - Protected Lands (Updated 07/26/2016.)
 - Act 250 Agricultural Soil Mitigation areas
 - Deer Wintering Areas
 - ANR's Vermont Conservation Design Highest Priority Forest Block Datasets
 - Forest Blocks - Connectivity
 - Forest Blocks - Interior
 - Forest Blocks - Physical Land Division
 - Hydric Soils
- TRORC Unsuitable areas (included in known constraints)**
- FEMA Floodways
 - Wilderness Areas, including National Wilderness Areas
 - Class 1 Wetland

1:40,000

1 inch = 3,333 feet

0 0.5 1

Miles

Wind

This map shows areas of potential wind energy development. It includes areas with good access to wind resources and also considers other conditions that may limit the feasibility of wind energy development. These limiting factors are referred to as constraints. Areas of prime wind potential exist where the natural conditions make development feasible and no constraints are present.

These maps are designed to initially identify areas and follow-up on-site work is required to verify the areas are feasible for projects. They are subject to revision and are NOT intended to green-light or fast-track projects.

DARK GREEN Prime: No Constraints within 1 mile 3 phase power
GREEN Prime: No Constraints no known or possible constraints present
ORANGE Constraints: no known but at least one or more possible constraints
BLUE GREEN Raw potential: with constraints